

Greys Matter

# DISCOID LUPUS ERYTHEMATOSUS

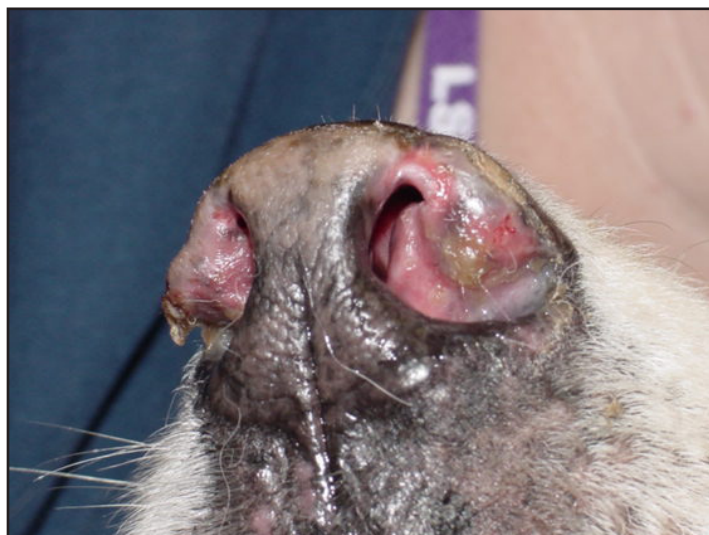
(DLE)

## What is DLE?

Discoid lupus erythematosus (DLE) is an immune-mediated condition that can affect some Greyhounds and other breeds of dogs. It occurs as the immune system inappropriately recognises the part of the skin in particular areas as foreign to the body, and thus attempts to attack it, causing damage to the cells of this area.

## What are the symptoms of DLE?

It appears as crusting, depigmented and sometimes ulcerated lesions of the nose. It can sometimes affect the skin around the eyes too.



## How is DLE treated?

There is no cure for DLE. But it can be managed quite successfully with a combination of medical treatments, and behavioural management.

Medical therapies are many but tend to involve drugs that modify the immune response. These may be topical ointments (creams/gels) or in severe cases, systemic treatments (tablets/capsules). These treatments require prescribing by a veterinarian and regular check ups (at least every 6 months) are recommended to assess your pet's condition and treatment regime.

In addition, because DLE may be worsened by exposure to UV light, it may flare up during summer. Changing your pet's routines to accommodate this may be recommended (prevent prolonged exposure to strong summer sun).